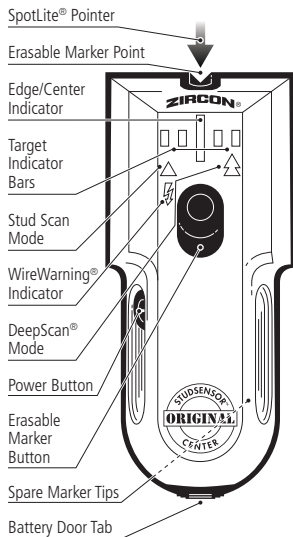


EN **ZIRCON®**
StudSensor™ CENTER
Quick Start Guide



READ COMPLETE INSTRUCTIONS AT
WWW.ZIRCON.COM



LEA LAS INSTRUCCIONES
 COMPLETAS EN WWW.ZIRCON.COM

⚠️ WARNING DO NOT ASSUME EVERYTHING DETECTED IS A STUD.

INDOOR USE ONLY. Not recommended for use on lath and plaster, ceramic tile, or carpet.

The Zircon® StudSensor™ CENTER stud finder locates the edges, center, and direction of wood and metal studs up to 3/4" (19 mm) in StudScan mode and 1 1/2" (38 mm) deep in DeepScan® mode.

SpotLite® pointer and haptic vibration clearly indicate the stud center.

LIMITED LIFETIME WARRANTY

Zircon Corporation ("Zircon") warrants to the original purchaser (or original user by gift) that this product will be free from defects in materials and workmanship for its useful life (not to exceed twenty years from date of purchase). This warranty is limited to the electronic circuitry of the product, and specifically excludes consumable parts, including batteries, and software, even if packaged with the product. Defects caused by abuse, modification, handling contrary to these instructions, other unreasonable use, or neglect are not covered under this warranty. No liability is accepted for normal wear and tear and minor defects which do not detract from the function of the product.

THIS LIMITED LIFETIME WARRANTY IS IN LIEU OF ALL OTHER WARRANTIES, EXPRESS OR IMPLIED, INCLUDING THE IMPLIED WARRANTIES OF MERCHANTABILITY AND FITNESS FOR A PARTICULAR PURPOSE. IN NO EVENT WILL ZIRCON BE LIABLE FOR ANY SPECIAL, INDIRECT, INCIDENTAL OR CONSEQUENTIAL DAMAGES RESULTING FROM POSSESSION, USE, OR MALFUNCTION OF THIS PRODUCT. NO OTHER REPRESENTATIONS OR CLAIMS OF A SIMILAR NATURE WILL BIND OR OBLIGATE ZIRCON.

Some states do not allow limitations on certain implied warranties and/or the limitation on incidental or consequential damages, so the above limitations and exclusions may not apply to you. This warranty gives you specific legal rights, and you may also

WireWarning® detection automatically detects and alerts to live, unshielded AC wires. When AC voltage is detected, the WireWarning® indicator illuminates.

⚠️ WARNING Tool may not detect AC activity if wires are not energized or more than 2" (50 mm) behind the scanned surface, in concrete, encased in conduit, behind a plywood shear wall or metallic wall covering, or if moisture is present in the environment or scanned surface.

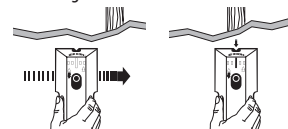
HOW TO USE:

1. Install two new AA batteries.
2. Place the tool flat against the wall and press and hold the Power button. Wait for all indicators, SpotLite® pointer, and vibration to activate to confirm calibration.
3. Keeping the button pressed, slowly slide the tool horizontally across the wall.

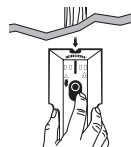


4. As the tool approaches a stud edge, the Target bars nearest the stud will illuminate. The red Edge indicator will illuminate over the stud edge.

5. Continue scanning until the SpotLite® pointer appears and vibration occurs indicating the stud center.



6. Mark the center location by pulling down Marker button.



7. Confirm stud location at several heights on the wall.

8. For DeepScan® mode, press the Power button twice, holding it down the second time.

have other rights which vary from state to state. This Limited Lifetime Warranty applies only to products purchased within the United States of America (USA) and Canada. For warranty applicable to products purchased in all other geographical areas, see www.zircon.com/warranty.

Any in-warranty defective product returned to Zircon, freight prepaid, along with dated purchase receipt and \$10.00 to cover shipping and handling, will be repaired or replaced, at Zircon's option. If the returned product is no longer available, Zircon may replace the product with a similar product of similar function. This is your sole and exclusive remedy for breach of this Limited Lifetime Warranty.

To return product, call the Zircon Customer Service number to request an RMA number and return product with shipment tracking to:

Zircon Corporation
 Attn: Returns Department
 1580 Dell Avenue
 Campbell, CA 95008-6992 USA

Include your name, return address, RMA number, and package tracking number. Allow 4 to 6 weeks for delivery. If you do not agree to the terms of this Limited Lifetime Warranty, you may not use this product and must promptly return it to the retailer, along with a dated purchase receipt within 30 days of purchase for a refund of the purchase price.

If vibration, all indicators, and SpotLite® pointer continually activate/flash, tool had a calibration error. Move the tool a few inches (5-8 cm) to the left or right and start your scan again.

⚠️ WARNING Do not rely exclusively on the tool to locate items behind a scanned surface. Locate items BEFORE penetrating the surface, and use other information including construction plans, standard spacing practices, and visible points of entry of pipes and wiring into walls.

DO NOT ASSUME THERE ARE NO LIVE ELECTRICAL WIRES IN THE WALL. DO NOT TAKE ACTIONS THAT COULD BE DANGEROUS IF THE WALL CONTAINS A LIVE ELECTRICAL WIRE. ALWAYS TURN OFF THE ELECTRICAL POWER, GAS, AND WATER SUPPLIES BEFORE PENETRATING A SURFACE. FAILURE TO FOLLOW THESE INSTRUCTIONS MAY RESULT IN ELECTRIC SHOCK, FIRE AND/OR SERIOUS INJURY OR PROPERTY DAMAGE.

Customer Service:
 1-800-245-9265
 or 1-408-963-4550
 Monday-Friday,
 8:00 a.m.- 5:00 p.m. PT

www.zircon.com
info@zircon.com

©2024 Zircon Corporation
 P/N 73372 • Rev A 03/24